



# MERIDIAN

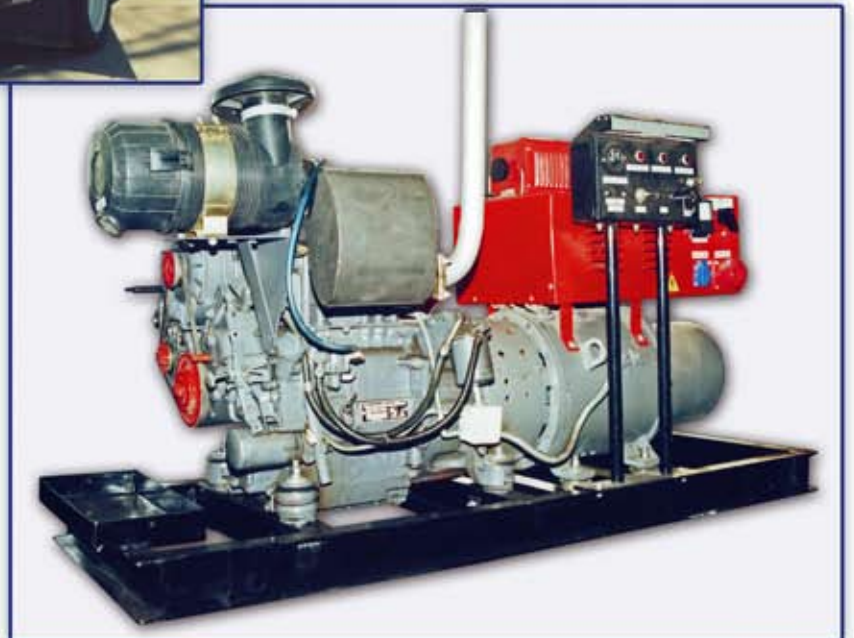
## ENGINE DRIVEN WELDERS

**Manufacturer: "Yuzhny meridian" Ltd.**

78 Kotlyarevskogo str., Kherson 73011, Ukraine  
Phone/fax: +380 (552) 436539  
Phone: +380 (552) 428326, 237040  
E-mail address: umeridian@umeridian.com.ua

5 Pulyuya str., Kyiv 03048, Ukraine  
Phone/fax: +380 (44) 2460833  
Phone: +380 (44) 2461132  
E-mail address: ngr@prio.com.ua

<http://www.umeridian.com.ua>



Product Name	Rated Output	Engine		Generator Model	AC Generator Model	Fuel Tank Capacity gals (ltrs)	Dimensions L×W×H inches (mm)	Weight lbs (kg)
		Model	Description					
AДД-250/5,5A	50...260 A DC 30 V	Deutz F2I511	Air-cooled Diesel Engine Electric Start	SAE-250/5.5		14.8 (56)	67.3×24.4×40.2 (1710×620×1020)	1102 (500)

Multi-purpose engine driven welder **AДД-250/5,5A** by MERIDIAN® is designed especially for welding professionals who demand superior welding arc for welding, cutting or welding deposition at field condition. A welding arc is supplied with **DC power** that makes it possible to weld using electrodes with any coatings.

Engine driven welder AДД-250/5,5A is especially designed to be mounted into **automobile repair shops of AMГ type** that are produced on the basis of the variety of the vehicles (including dual-purpose vehicles, trucks, and minibuses by Ford, Mercedes, UAZ, GAZel, and other vendors). These automobile repair shops are designed for repair and maintenance works on oil-trunk pipelines, gas-main pipelines, water mains, gas equipment, communal services, etc.

These engine driven welders are equipped with the generators that are certified to provide the key welding characteristics: easy starts, arc stability and elasticity, smooth arc action, reduced spatter, and great bead appearance. During certification procedures these characteristics were found to match or even exceed the similar characteristics of the collector-type generators. These high rates have been achieved by using the original circuit improvements and wise choice of the moderate current load. The synchronous brushless self-excited valve-type DC generator contains no brushes, rotating diodes or controlled semiconductors that results in very simple design and high efficiency. All bearings are supplied sealed for life and are, therefore, not regreasable. The generators of this type are the most reliable generators – no maintenance required.

What is more, both welding generator and auxiliary AC generator are mounted on single axe and within single frame. As result the engine driven welders AДД-250/5,5A provides added value at the job site by delivering up to **5.5 kVA of AC auxiliary power** for lights, grinders, drills and other common tools. It allows welding and having access to AC power simultaneously – the full 5.5 kVA can be delivered while welding.

Terminal box of the auxiliary generator is mounted within common welder control panel. Sockets to connect power load, gauges and control equipment are placed on the side panel.

AДД-250/5,5A includes solid durable welded frame, fuel tank, bottom plate and easily demountable framework that is of extremely rugged construction in order to withstand the rough handling. Proper arrangement of the control panels delivers easy access to any component for service and maintenance.

Some of the best features and advantages of AДД-250/5,5A:

- Instant start;
- Excellent DC multi-process welding;
- Multiple level control of the welding current and excellent performance in whole controlled range;
- Delivers 5.5 kVA of 220V AC generator power to run lights, tools and weld all at the same time;
- Low fuel consumption;
- Long engine and generator lives;
- Reliability in hard usage.

High efficiency, reliability and simplicity of the operation and maintenance make this engine driven welder **the most economical off-line supply source.**

MERIDIAN® engine driven welders meet the requirements of industry standard ГОСТ 2402 "Engine driven welders. Common technical requirements" as well as all the safety standards that is confirmed by УкрСЕПРО certificate.

The warranty period is twelve months.